

# Real-Time Heavy Metal Monitoring for Oil and Gas Operation

Effluent Discharge Testing & Process Controls - Industrial Oil & Gas Company

## KETOS Customer

Large midstream oil and gas company (with hundreds of miles of pipeline infrastructure) that develops, produces, treats, and transports water for exploration and production.

## Challenge

The client faced a number of issues before the installation of the KETOS system:

- Inability to autonomously detect Iron, Selenium and other heavy metals with lab accuracy.
- Failed instruments that could not reliably and repeatedly detect heavy metals.
- Uncertainty in use correlations and guess estimations.

## Solution

KETOS was able to implement a number of solutions including:

- KETOS SHIELD Sensor System installed outdoors to autonomously test effluent water.
- Data collected from KETOS SHIELD Sensor System and aggregated in a data warehouse.
- Automated Analytics on the KETOS platform.
- Automated Reporting and Alerts set-up for process controls.
- Outdoor Installation.



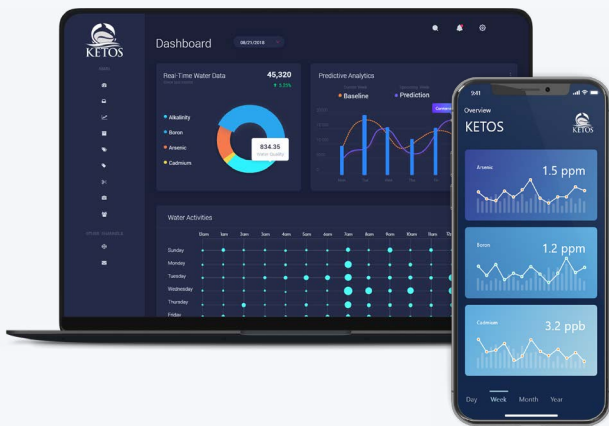
### SOLUTION BENEFITS

- ✓ Frequently and Autonomously Test for Heavy Metals
- ✓ Lab Accurate Results in Real Time
- ✓ Real Time Reporting
- ✓ Real Time Threshold based Alerts
- ✓ Cost Reduction - Labor and Equipment
  - Instruments
  - Calibration
  - Cleaning
  - Sampling
  - Lab Tests
- ✓ Data-Driven Decision Making

## Outcome

After installing the KETOS Solution, the client was able to:

- Increased revenue by monetizing high-quality drinking water for its appropriate applications.
- Reduced time and expense associated with manual sample collections and lab testing.
- Leveraged real-time water sample test results in the KETOS platform.
- Automatically detect water quality issues and pre-empt potential compliance issues.



## About KETOS

KETOS is a fully integrated platform that combines hardware, software, connectivity, automated reporting, predictive analytics, and maintenance to automate water monitoring and testing. KETOS enables water operators to identify and solve mission-critical water efficiency and quality challenges in real-time, or before they happen through predictive algorithms, to ensure that water meets specific quality and safety standards.

[LEARN MORE](#)

*Proactively Solving Problems with KETOS Analytics*

[REQUEST A DEMO](#)

CONNECT WITH US    