

# Water Quality Monitoring to Ensure Consistent Product Quality

Multisource (Ground & Surface) Water Monitoring - Open Field Vineyard

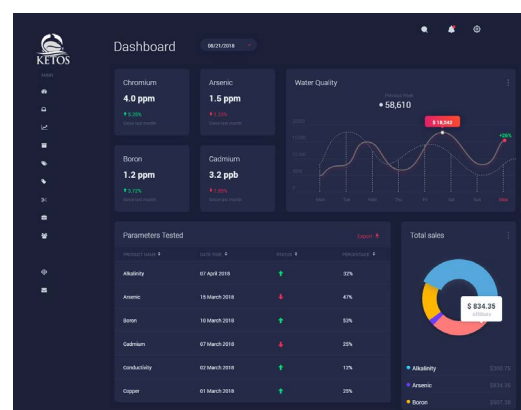
## KETOS Customer

A vineyard in California's Central Valley that grows grapes, almonds, and a variety of other crops.

## Challenge

The client faced a number of issues before the installation of the KETOS system:

- Inability to obtain real-time insight into Nitrates and Boron from their groundwater supply.
- Need for being able to generate the correct mixture of surface water and groundwater in order to protect the crop against excess fertilization and ensure proper nutrient management.
- Needed to ensure safe water was sent back to the aquifer.



## Solution

KETOS was able to implement a number of solutions including:

- KETOS SHIELD Sensor System installed to autonomously sample and analyze water.
- Automated water sample test results and Analytics in the KETOS platform.
- Data collected from KETOS SHIELD Sensor System and aggregated in a data warehouse.

### SOLUTION BENEFITS

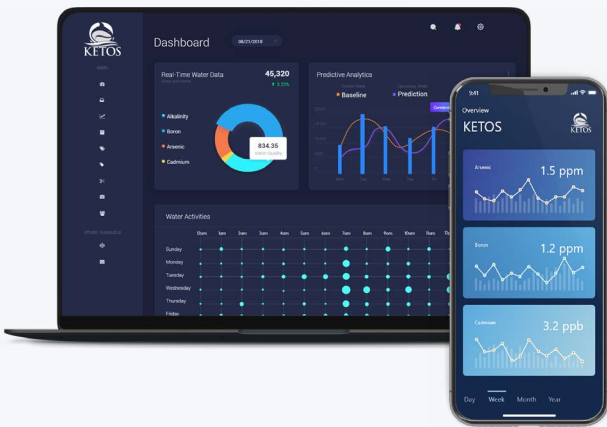
- ✓ Water Composition in Real-Time
- ✓ Lab Accurate Results
- ✓ Consistent Product Quality / Taste
- ✓ Protect Crops from Excess Fertilization
- ✓ Proper Nutrient Management
- ✓ Real Time Reporting & Threshold based Alerts
- ✓ Cost Reduction - Labor and Equipment
- ✓ Data-Driven Decision Making
- ✓ Pre-empt Compliance Issues
- ✓ Outdoor Installation



## Outcome

After installing the KETOS Solution, the client was able to:

- Gain real-time insight into water composition.
- Ensure consistent product quality / taste.
- Protect crops from excess fertilization.
- Ensure water delivered back to the aquifer is safe and adheres to compliance standards.
- Conserve surface water.



## About KETOS

KETOS is a fully integrated platform that combines hardware, software, connectivity, automated reporting, predictive analytics, and maintenance to automate water monitoring and testing. KETOS enables water operators to identify and solve mission-critical water efficiency and quality challenges in real-time, or before they happen through predictive algorithms, to ensure that water meets specific quality and safety standards.

[LEARN MORE](#)

*Proactively Solving Problems with KETOS Analytics*

[REQUEST A DEMO](#)

CONNECT WITH US    